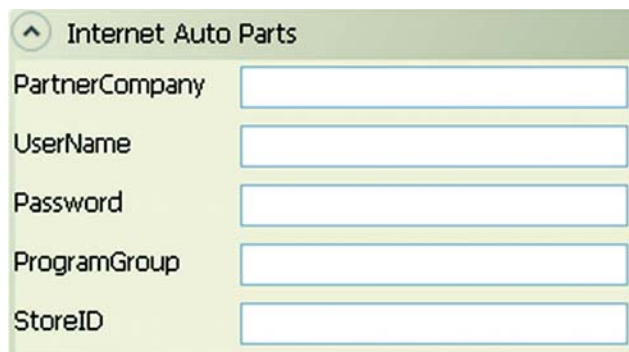


INSTRUCTIONS: INTERNET AUTOPARTS (IAP) ONLINE CATALOG SETUP

Select Menu Item: Setup > Company Setup > Catalog Setup

Step 1: Complete the information in the IAP Online setup (Image 1):



The screenshot shows a web form titled "Internet Auto Parts" with a collapse arrow on the left. The form contains five input fields, each with a label to its left: "PartnerCompany", "UserName", "Password", "ProgramGroup", and "StoreID". All fields are currently empty.

Image 1

Special Instructions:

If you do not have this information, you may obtain it directly from your parts supplier.

Contact their technical support and request IAP credentials to use in the AllData Manage shop management software.

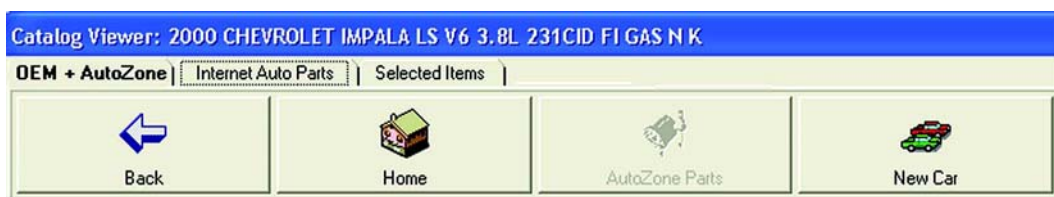


Image 2

USING THE IAP ONLINE CATALOG

Step 1: Navigate to the *Catalog* screen for parts selection screen (Image 1).

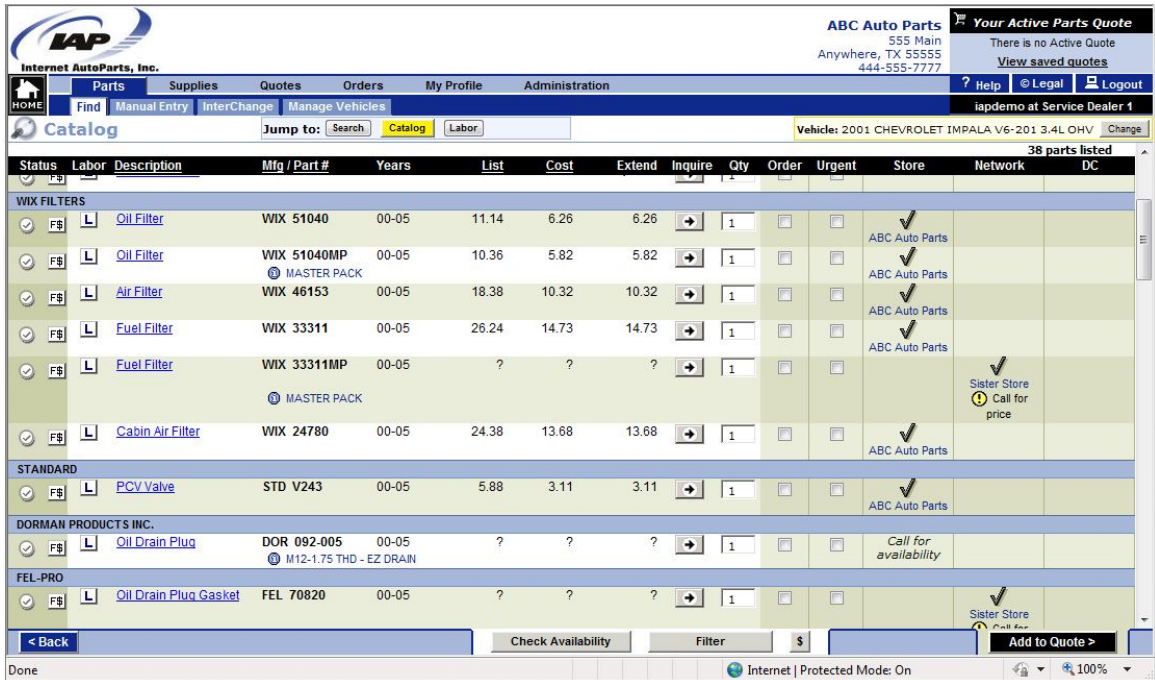


Image 1

Step 2: Click on the **ORDER** check box for required parts from the IAP Online catalog and click **VIEW/ADD TO QUOTE** to add selected part items to the *Selected Items* screen.

Note: Review the help files in ALLDATA Manage for complete instructions on using IAP.